

# FMI and Facies Analyses of the Codell Sandstone in the Redtail Field, North-Central Denver Basin

**Sean H. Rascoe**  
**MS 2024**



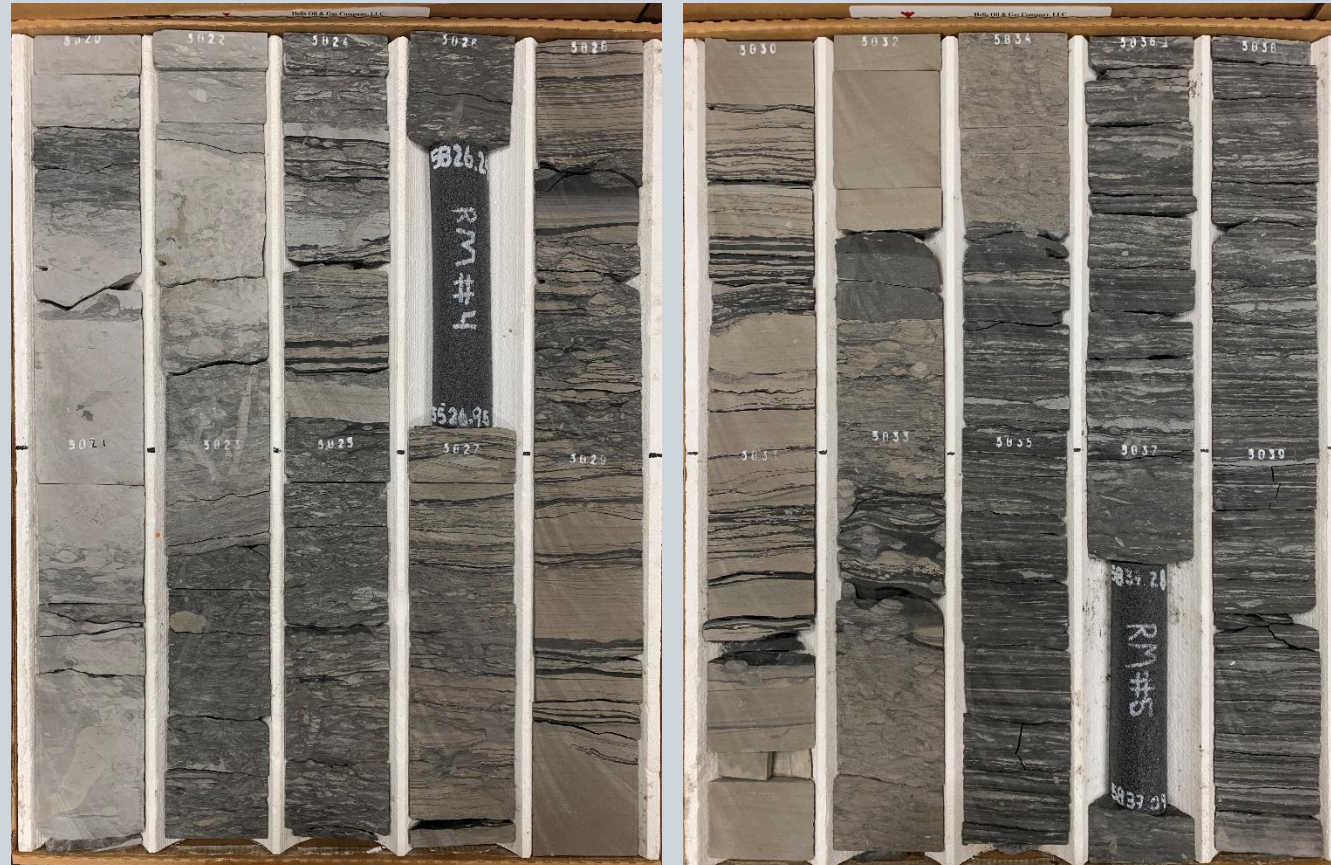
COLORADO SCHOOL OF  
**MINES**  
**MUDTOC**





# Overview

- About me
- Redtail Field
  - Cores
  - FMI Image Logs
- Work to be completed



Horsetail 19N-1924M



# About Me

Born in New Jersey

Raised in Saratoga Springs, New York

- Played HS Varsity Tennis, 16 years of tennis
- Graduated SUNY Oneonta with a Bachelor's degree in geology 2020

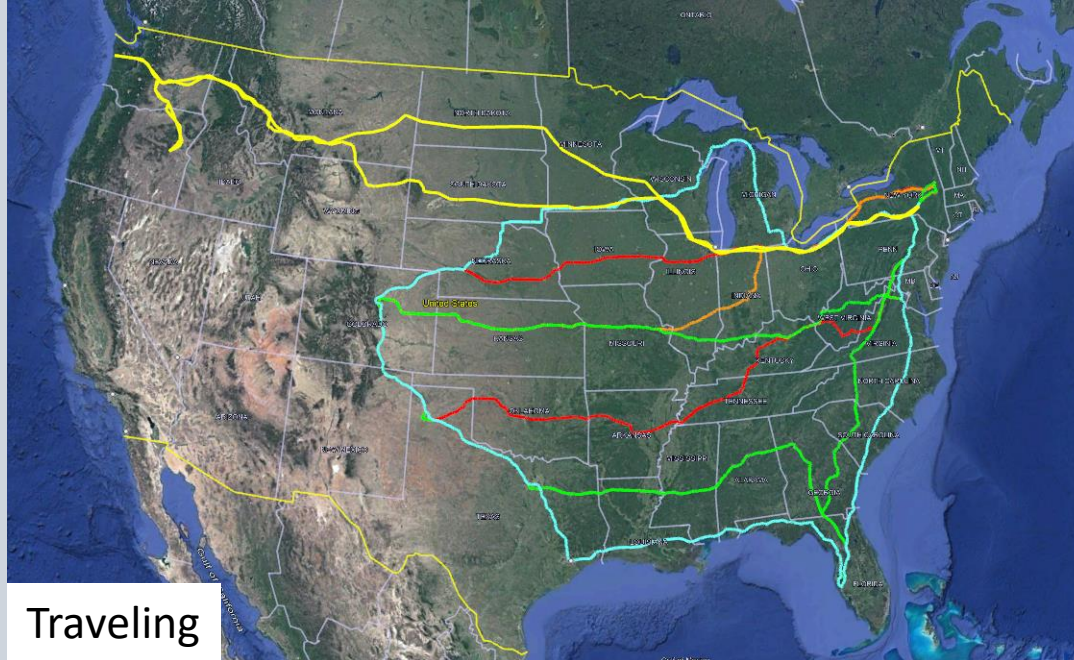
Moved out to Colorado for a Professional Master's degree in petroleum reservoir systems from CSM

- Graduated Fall of 2021





# About Me



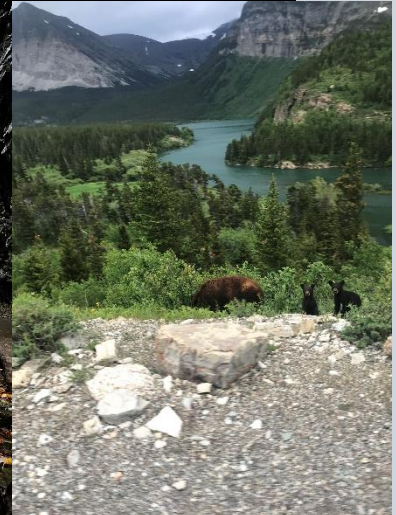
Traveling



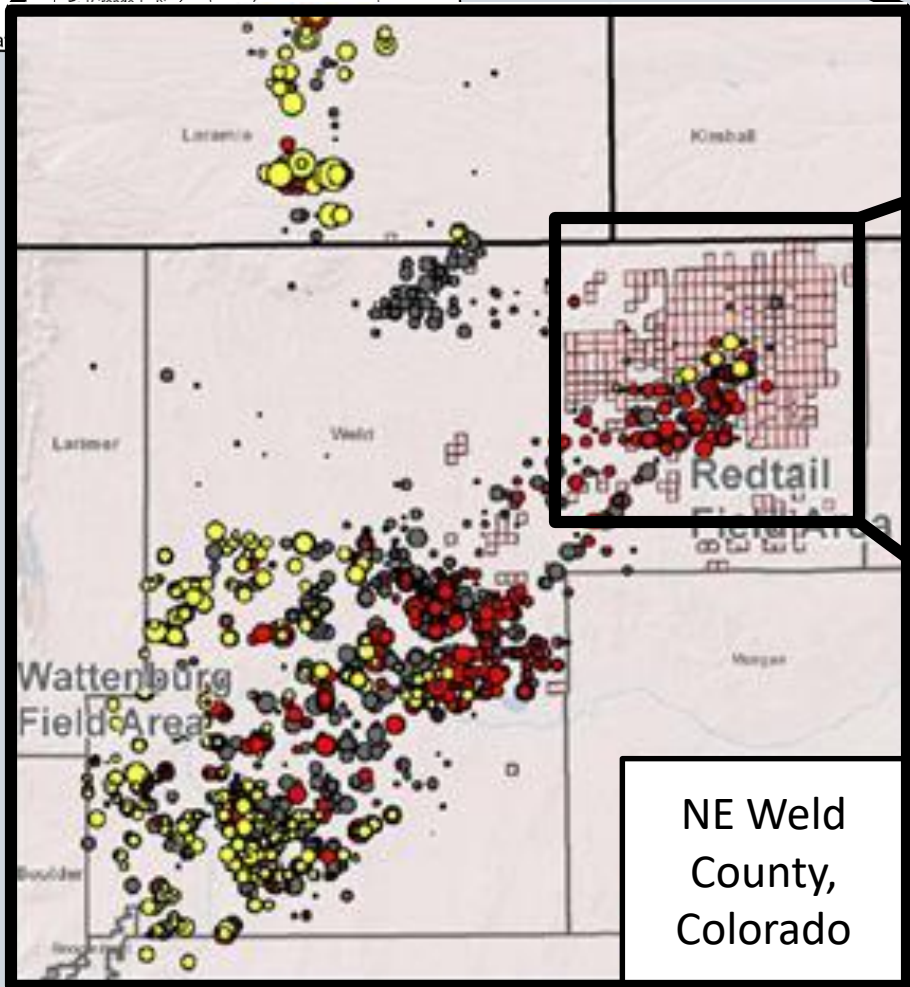
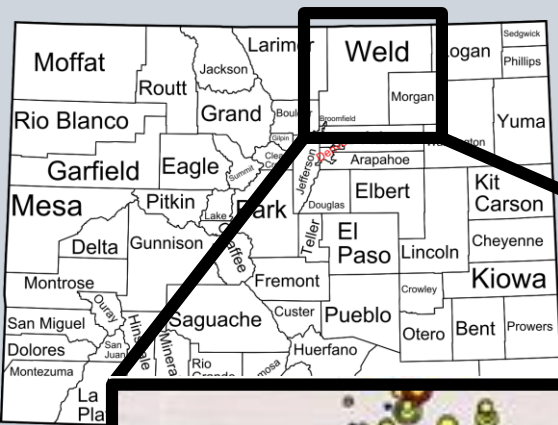
Photography



Hiking

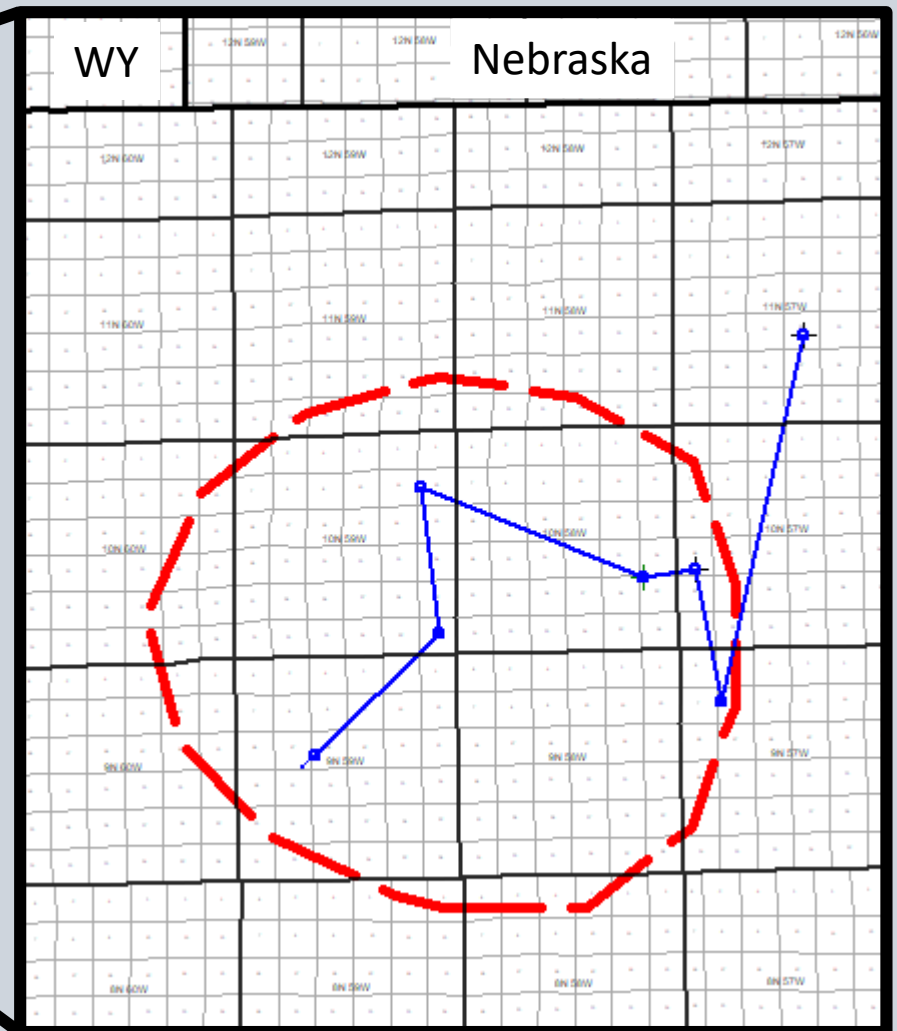


# Redtail Field Overview



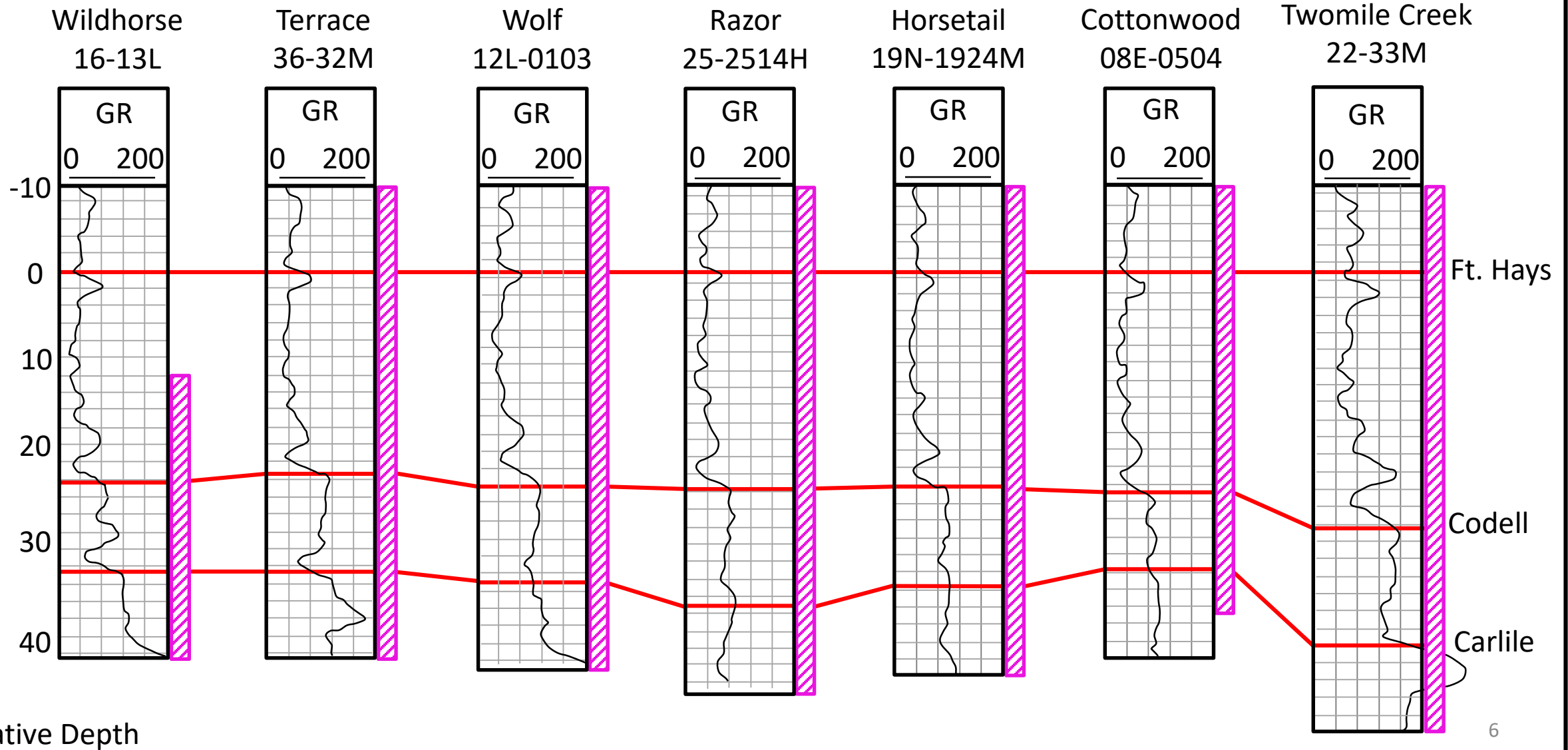
NE Weld  
County,  
Colorado

- Extensive and  
Numerous Datasets
- Logs
  - FMI Image logs
  - Cores
  - Lab core analysis results



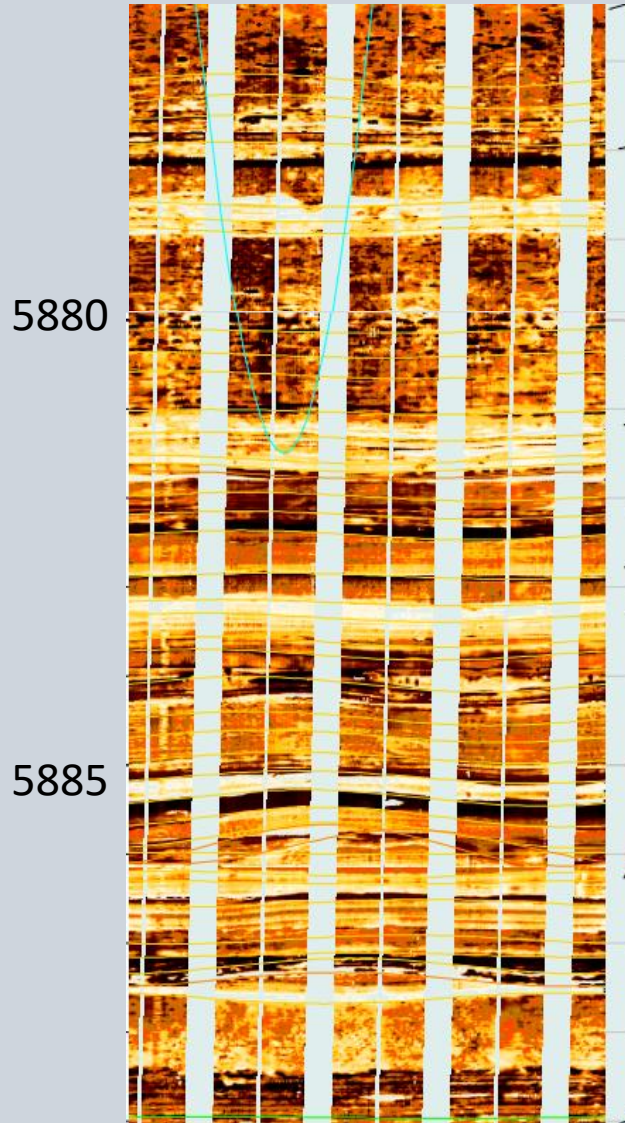


# Cores & Cross-section



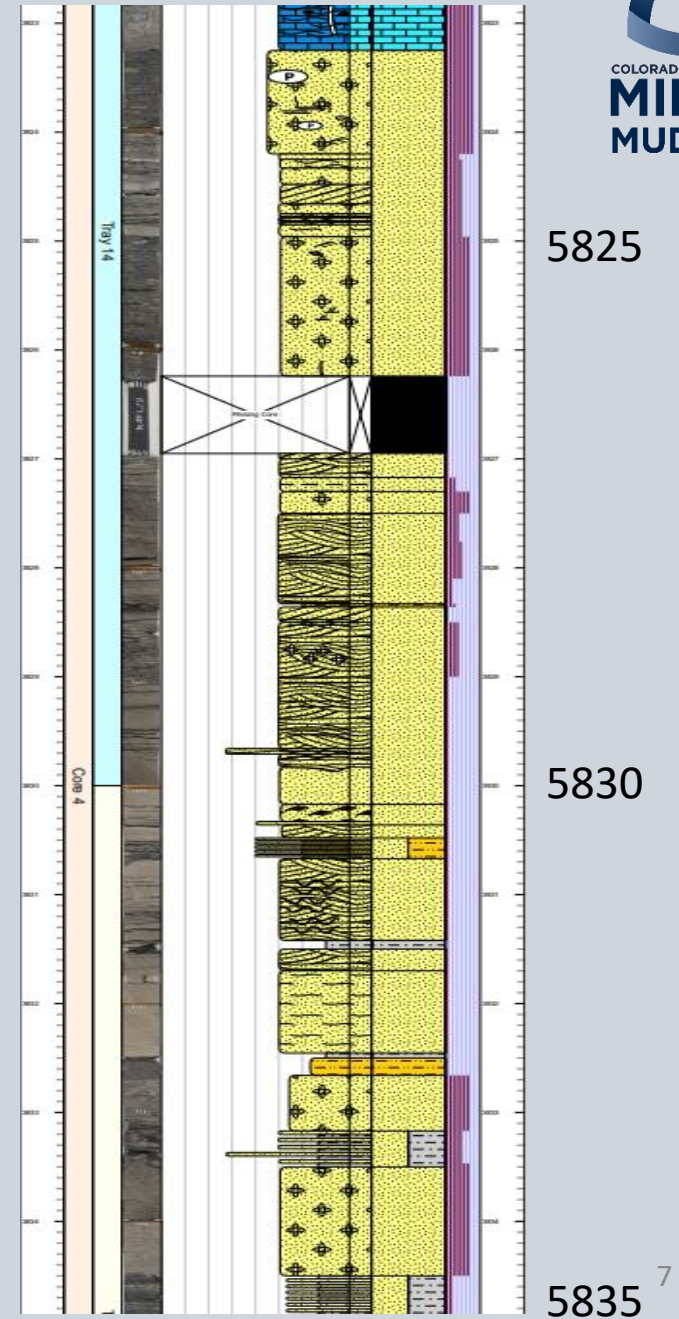
# FMI Image Logs

Depth Razor 25-2514H



Can these hummocky sections be correlated across the field?

Horsetail 19N-1924M





# FMI Image Logs

Horsetail 19N-1924M

Depth

Razor 25-2514H

Fort Hays Limestone

Codell Sandstone

Carlile Shale

5825

Bioturbated beds

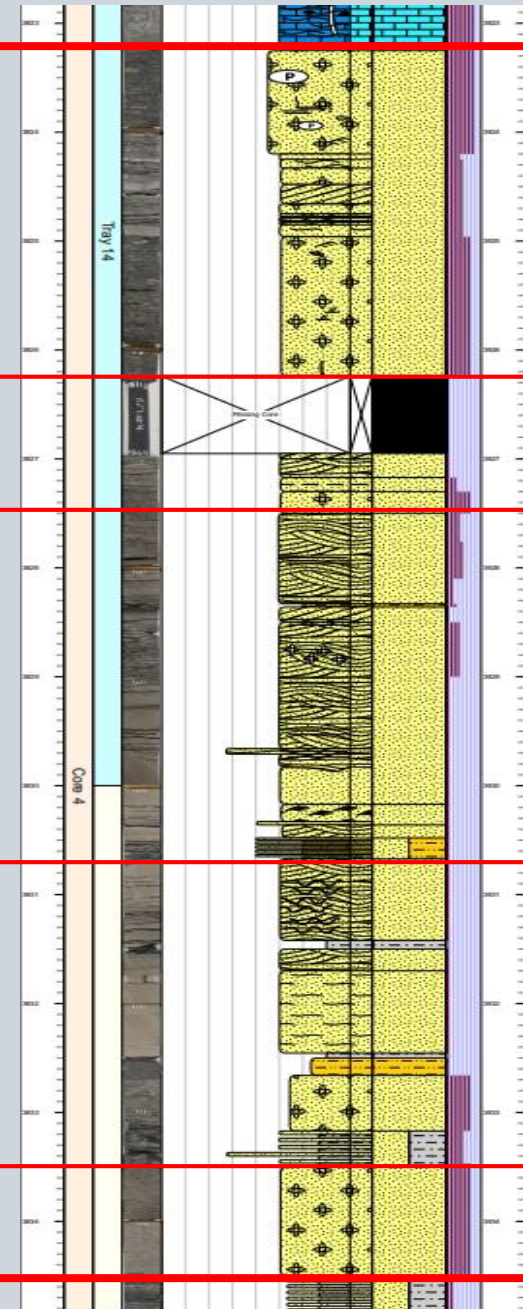
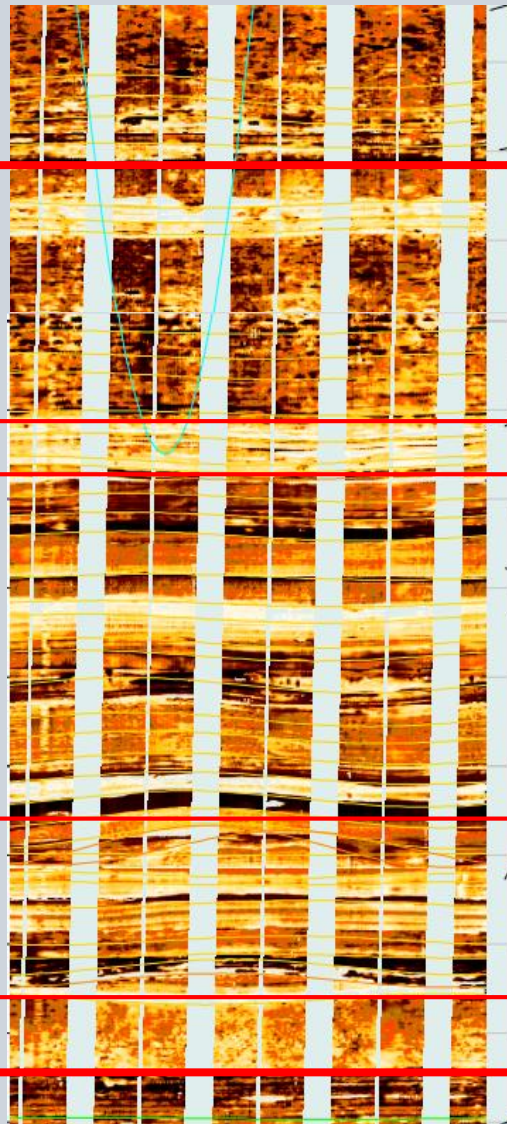
5880

Low angle cross  
laminations

5830

5885

5835<sup>8</sup>





# Work to be Completed

Deep dive into FMI image logs and data

Continued analysis of all 7 cores, and tying them to image logs

Oil samples & source beds



# Thank you to our Sponsors!

## Sponsoring Member Companies



EOG Resources



HELIS OIL & GAS, L.L.C.

HALLIBURTON



## In-Kind Supporting Companies



Mike Johnson & Associates







COLORADO SCHOOL OF  
**MINES**  
**MUDTOC**

